

# Solenoid operated valves pilot operated poppet type

## 2-way normally open

## Common cavity, Size 08

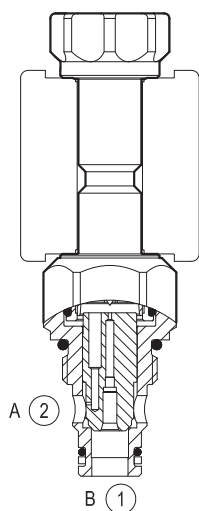
VEI-8A-06-NA

OD.15 - X - Y - Z - S0

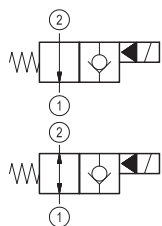
**RE 18323-06**

Edition: 01.2016

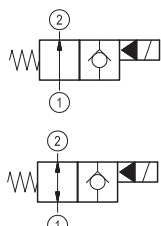
Replaces: 10.2013



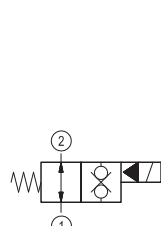
## ▼ Version 1



## ▼ Version 2



## ▼ Version 3

**Technical data**

General		
Weight		0.12 kg (0.26 lbs)
Installation orientation		Optional
Ambient temperature range		-30 to 60 °C (-22 to 140 °F)
Hydraulic		
Max. operating pressure		350 bar (5000 psi)
Max. proof pressure		420 bar (6000 psi)
Flow range		1.5 - 40 l/min (0.4 - 11 gpm)
Fatigue cycle life		1 million cycles at 350 bar
Max. internal leakage		20 drops/min.
Fluid temperature range		-20 to 80 °C (-4 to 176 °F)
Fluids: Mineral-based or synthetics with lubricating properties at viscosities of 20 to 380 mm²/s (cSt)		
Installation torque		39 - 51 Nm (29 - 38 ft-lbs)
Recommended degree of fluid contamination		Nominal value max. 10 µm (NAS 8) ISO 4406 19/17/14
MTTFd		150 years see RE 18350-51
Cavity		CA-08A-2N see 18325-70
Lines bodies and standard assemblies		Please refer to section “Hydraulic integrated circuit” or consult factory
Seal kit – version 1	code material no.	RG08A2010520100 R901101437
Seal kit – version 2-3	code material no.	RG08A2010530100 R901101544
Seal kit coil	code material no.	RG12A1PNBR7010 R934003958
Other technical data		See data sheet 18350-50
Electrical		
Type of voltage		DC voltage
Coil type		S8-356 see 18325-90
Supply voltage		See data sheet 18325-90
Nominal voltage		± 10%
Power consumption		20 W
Duty cycle coil		See characteristic curves %
Type of protection		See data sheet 18325-90
Note: Coils must be ordered separately		

Ordering code

<b>OD.15</b>	<b>X</b>	<b>18</b>	<b>Y</b>	<b>S0</b>
--------------	----------	-----------	----------	-----------

Solenoid operated valves  
pilot operated poppet type  
2-way normally open

monodirectional type

02

bidirectional type

06

monodirectional type

10

bidirectional type

04

bidirectional type

32

Tube not welded

standard type

1A

knob style manual override

1B

Cable operated pull style override

1C

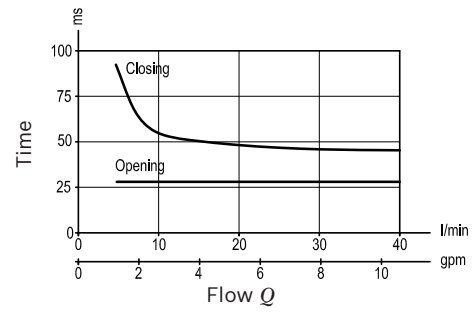
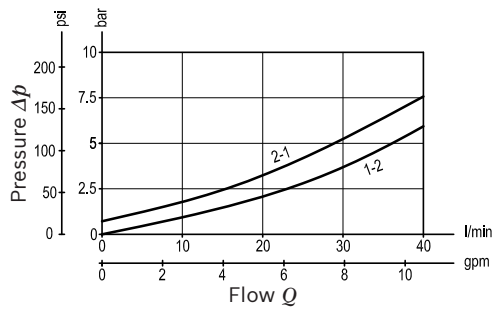
18 Common cavity: CA-08A-2N

Type	Material number
OD1502181AS000	R901091102
OD1502181BS000	R901091105
OD1502181CS000	R901091106
OD1506181AS000	R901091130
OD1506181BS000	R901091131
OD1506181CS000	R901091132
OD1504181AS000	R901091121
OD1504181BS000	R901091122

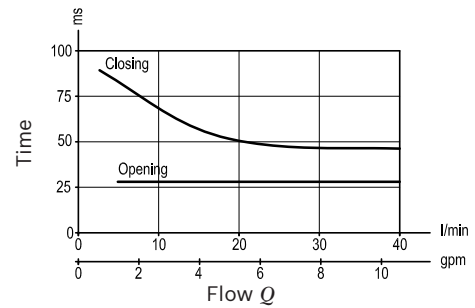
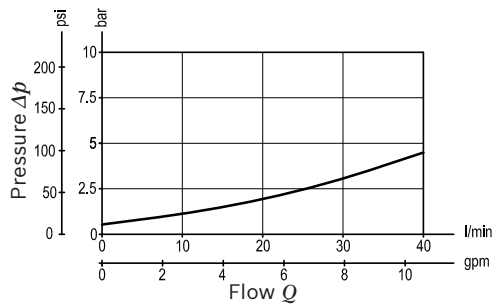
Type	Material number
OD1504181CS000	R901091123
OD1510181AS000	R901091152
OD1510181BS000	R901091154
OD1510181CS000	R901091155
OD1532181AS000	R901091171
OD1532181BS000	R901091173
OD1532181CS000	R901091174

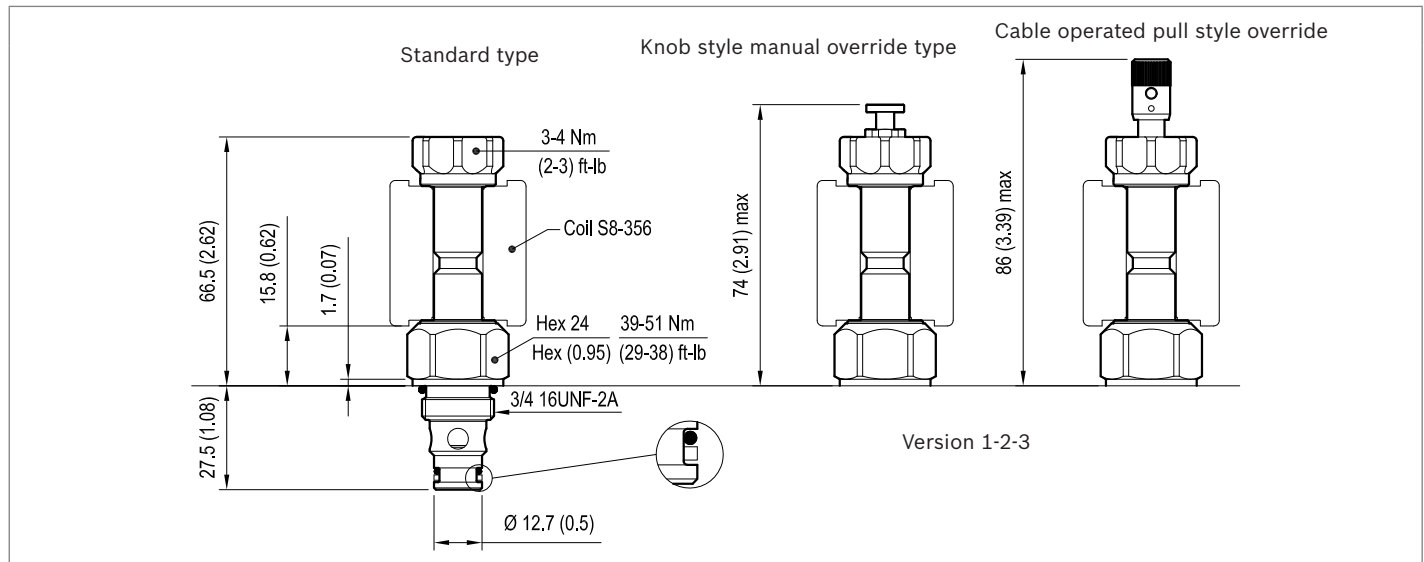
**Characteristic curves****Version 1-2**

Standard

**Version 3**

Standard



**Dimensions**▼ **Version 1: Solenoid operated valve, poppet 2-way normally open**▼ **Version 2: Solenoid operated valve, poppet 2-way normally open**▼ **Version 3: Solenoid operated valve, poppet 2-way double lock normally open**