

Solenoid operated valves pilot operated poppet type

2-way normally closed

Special cavity, 021-E

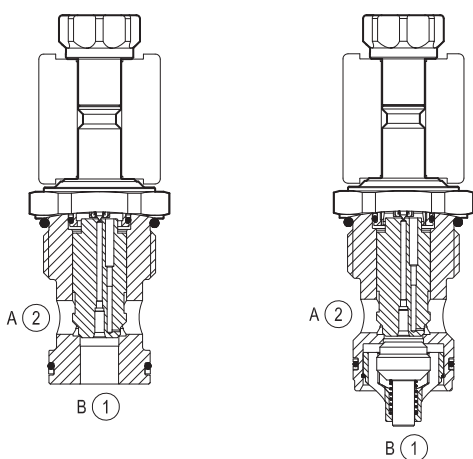
VEI-8A-12-NC

OD.15 - X - 21 - Y - Z

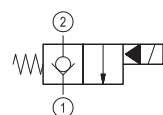
RE 18323-04

Edition: 01.2016

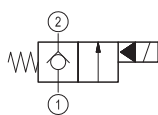
Replaces: 03.2015



▼ Version 1



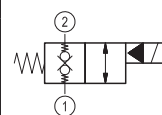
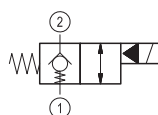
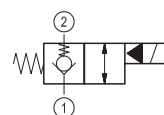
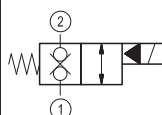
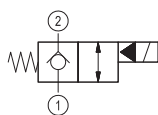
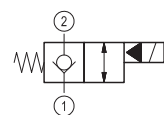
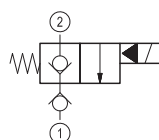
▼ Version 2



▼ Version 3

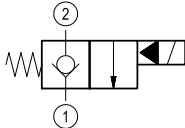
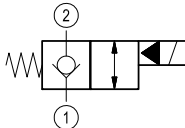
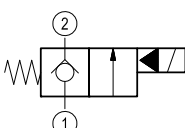
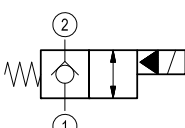
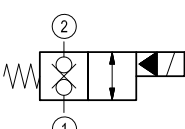
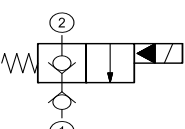
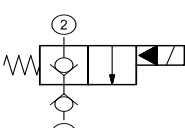
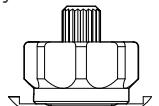


▼ Version 4

**Technical data**

General	
Weight	0.34 kg (0.75 lbs)
Installation orientation	Optional
Ambient temperature range	-30 to 60 °C (-22 to 140 °F)
Hydraulic	
Max. operating pressure	350 bar (5000 psi)
Max. proof pressure	420 bar (6000 psi)
Flow range	5 - 150 l/min (1 - 40 gpm)
Fatigue cycle life	1 million cycles at 350 bar
Max. internal leakage	20 drops/min.
Fluid temperature range	-20 to 80 °C (-4 to 176 °F)
Fluids: Mineral-based or synthetics with lubricating properties at viscosities of 20 to 380 mm ² /s (cSt)	
Installation torque	130 - 150 Nm (96 - 111 ft-lbs)
Recommended degree of fluid contamination	Nominal value max. 10 µm (NAS 8) ISO 4406 19/17/14
MTTFd	150 years see RE 18350-51 except for codes marked with *
Special cavity	021-E see 18325-75
Lines bodies and standard assemblies	Please refer to section "Hydraulic integrated circuit" or consult factory
Seal kit – version 1	code material no. RG21E201052010 R934003566
Seal kit – version 2-3	code material no. RG21E201053010 R934003567
Seal kit coil	code material no. RG12A1PNBR7010 R934003958
Other technical data	See data sheet 18350-50
Electrical	
Type of voltage	DC voltage
Coil type	S8-356 see 18325-90
Supply voltage	See data sheet 18325-90
Nominal voltage	± 10%
Power consumption	20 W
Duty cycle coil	See characteristic curves %
Type of protection	See data sheet 18325-90
Note: Coils must be ordered separately	

Ordering code

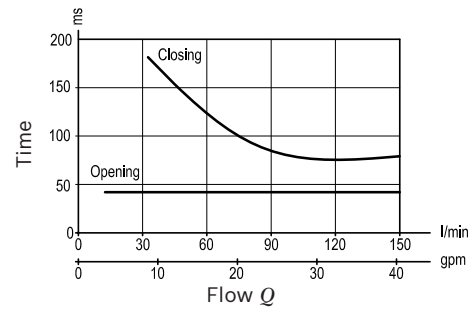
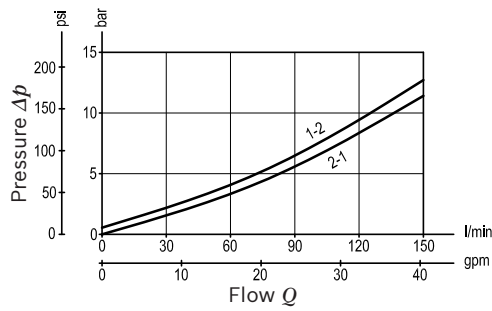
OD.15	X	21	Y	Z
Solenoid operated valves pilot operated poppet type 2-way normally closed				
monodirectional type				S0 = Tube not welded
 01				S8 = Tube not welded with extra spring
bidirectional type				 05
monodirectional type				 09
bidirectional type				 03
bidirectional type				 31
monodirectional type				 11
				3A 
				3D 
				21 Special cavity: 021-E

Type	Material number
OD1501213AS000	R901144300
OD1501213AS800	R934000707
OD1501213DS000	R901085462
OD1503213AS000	R901113666
OD1503213AS800	R934003065
OD1503213DS000	R934000792
OD1503213DS800	R934003066
OD1505213AS000	R901104395
OD1505213AS800	R901119221

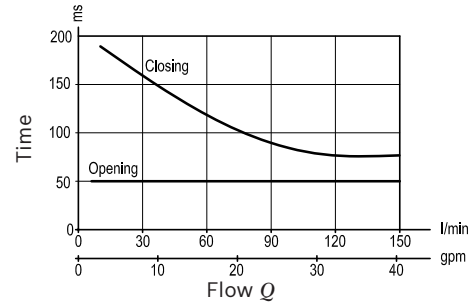
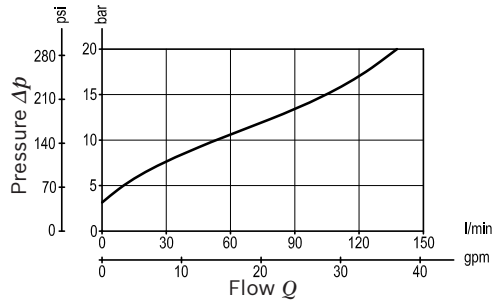
Type	Material number
OD1505213DS000	R901119267
OD1509213AS000	R901132881
OD1511213AS000 *	R901138183
OD1511213AS800 *	R934001086
OD1531213AS000	R901104412
OD1531213AS800	R901119002
OD1531213DS000	R901132876
OD1531213DS800	R901125793

Characteristic curves**Version 1 – Version 2**

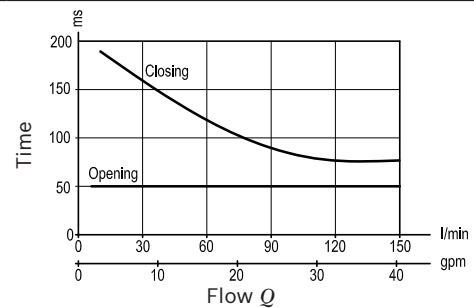
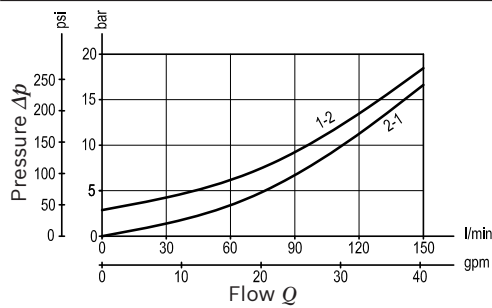
Standard



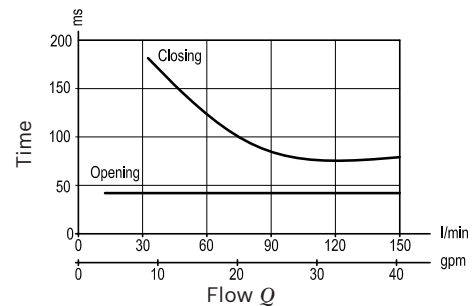
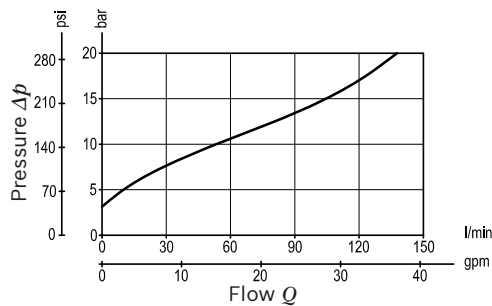
Extra spring

**Version 3**

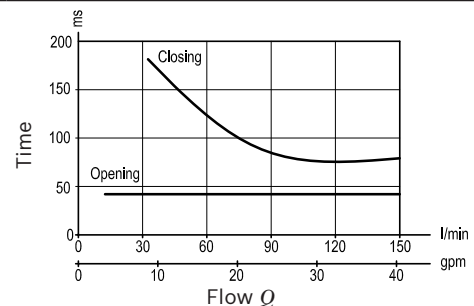
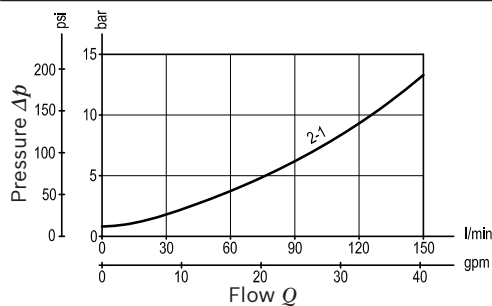
Standard

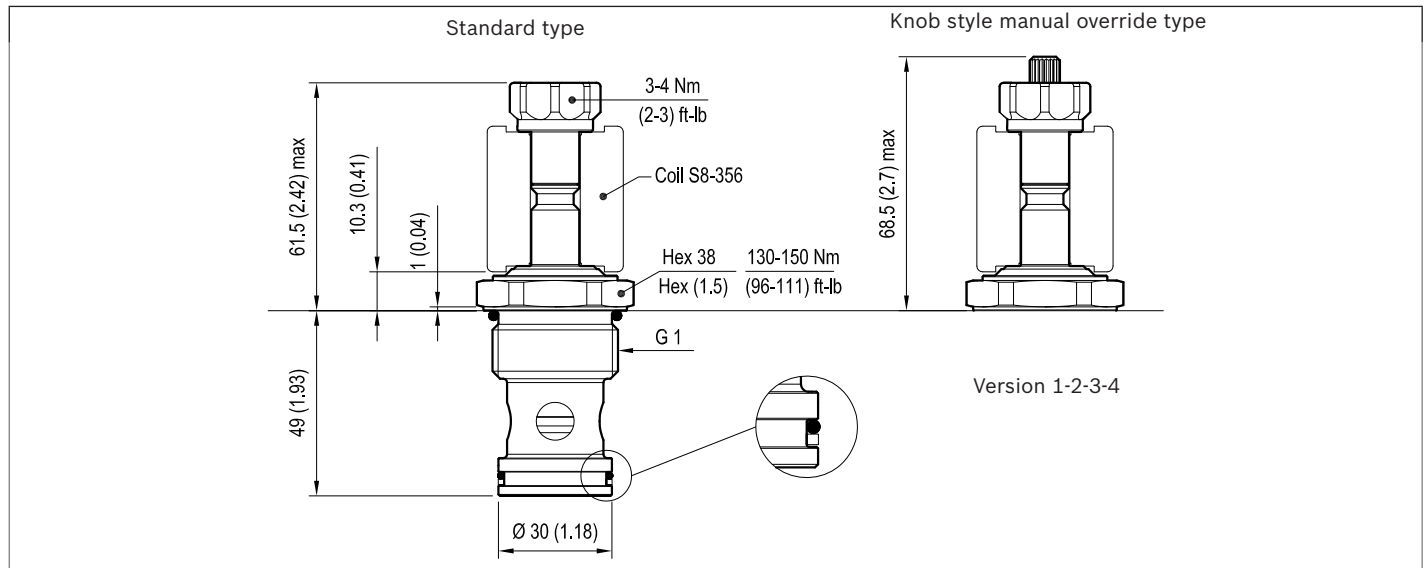
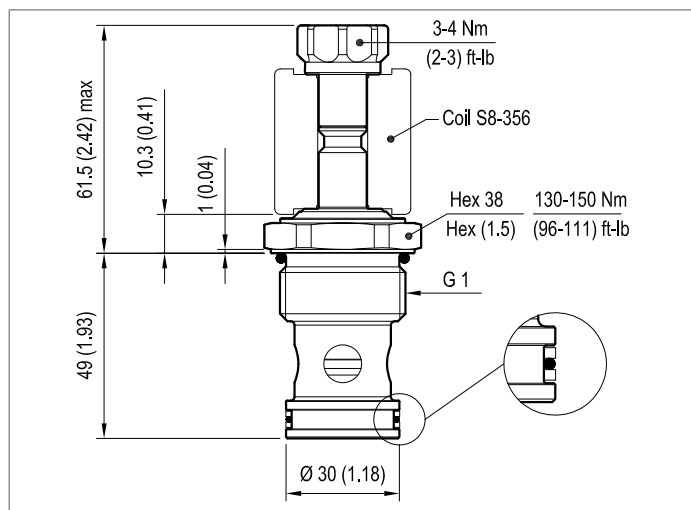


Extra spring

**Version 4**

Standard



Dimensions▼ **Version 01: Solenoid operated valves, poppet 2-way normally closed**▼ **Version 02: Solenoid operated valves, poppet 2-way normally closed**▼ **Version 03: Solenoid operated valves, poppet 2-way double lock normally closed**▼ **Version 4: Solenoid operated valves, poppet 2-way normally closed**