

Solenoid operated valves pilot operated poppet type

2-way normally closed

Common cavity, Size 16

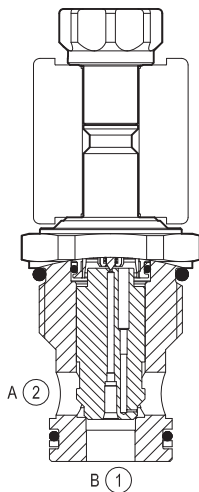
VEI-8A-16A-NC

OD.15 - X - 75 - Y - S0

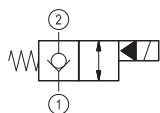
RE 18323-17

Edition: 01.2016

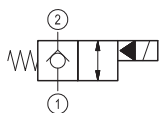
Replaces: 10.2013



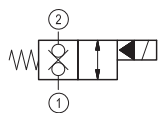
▼ Version 05



▼ Version 03



▼ Version 31



Technical data

General		
Weight		0.32 kg (0.71 lbs)
Installation orientation		Optional
Ambient temperature range		-30 to 60 °C (-22 to 140 °F)
Hydraulic		
Max. operating pressure		350 bar (5000 psi)
Max. proof pressure		420 bar (6000 psi)
Flow range		5 - 150 l/min (1 - 40 gpm)
Fatigue cycle life		1 million cycles at 350 bar
Max. internal leakage		20 drops/min.
Fluid temperature range		-20 to 80 °C (-4 to 176 °F)
Fluids: Mineral-based or synthetics with lubricating properties at viscosities of 20 to 380 mm²/s (cSt)		
Installation torque		130 - 150 Nm (96 - 111 ft-lbs)
Recommended degree of fluid contamination		Nominal value max. 10 µm (NAS 8) ISO 4406 19/17/14
MTTFd		150 years see RE 18350-51
Cavity		CA-16A-2N see 18325-70
Lines bodies and standard assemblies		Please refer to section “Hydraulic integrated circuit” or consult factory
Seal kit – version 05	code material no.	RG75E201052010 R934004079
Seal kit – version 03-31	code material no.	RG75E201053010 R934004080
Seal kit coil	code material no.	RG12A1PNBR7010 R934003958
Other technical data		See data sheet 18350-50
Electrical		
Type of voltage		DC voltage
Coil type		S8-356 see 18325-90
Supply voltage		See data sheet 18325-90
Nominal voltage		± 10%
Power consumption		20 W
Duty cycle coil		See characteristic curves %
Type of protection		See data sheet 18325-90
Note: Coils must be ordered separately		

Ordering code

OD.15	X	75	Z	S0
--------------	----------	-----------	----------	-----------

Solenoid operated valves
pilot operated poppet type
2-way normally closed

bidirectional type

05

bidirectional type

03

body lock

31

Tube not welded

standard type

3A

knob style manual override

3D

75 Common cavity: CA-16A-2N

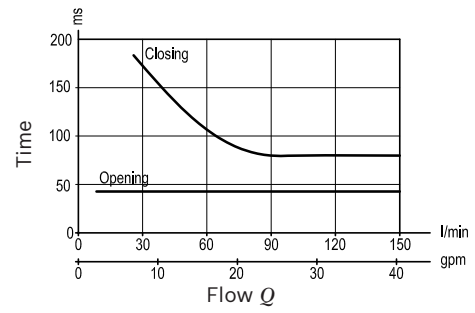
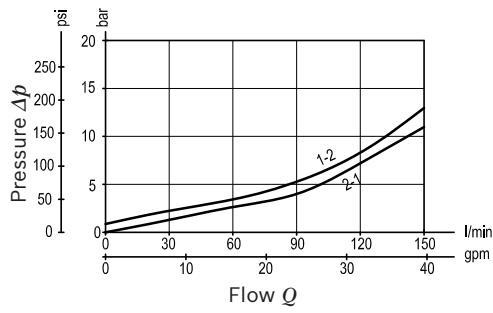
Type	Material number
OD1503753AS000	R901094726
OD1505753AS000	R901094745
OD1505753DS000	R901094746
OD1531753AS000	R901094747
OD1531753DS000	R901094748

Type	Material number

Characteristic curves

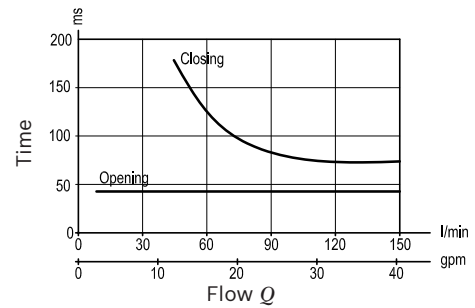
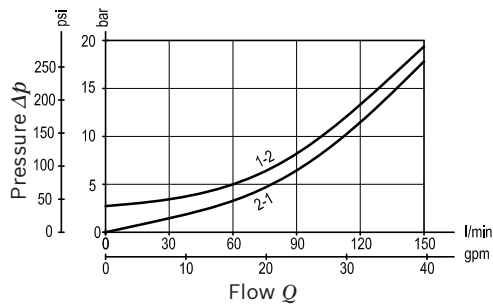
Version 05-03

Standard



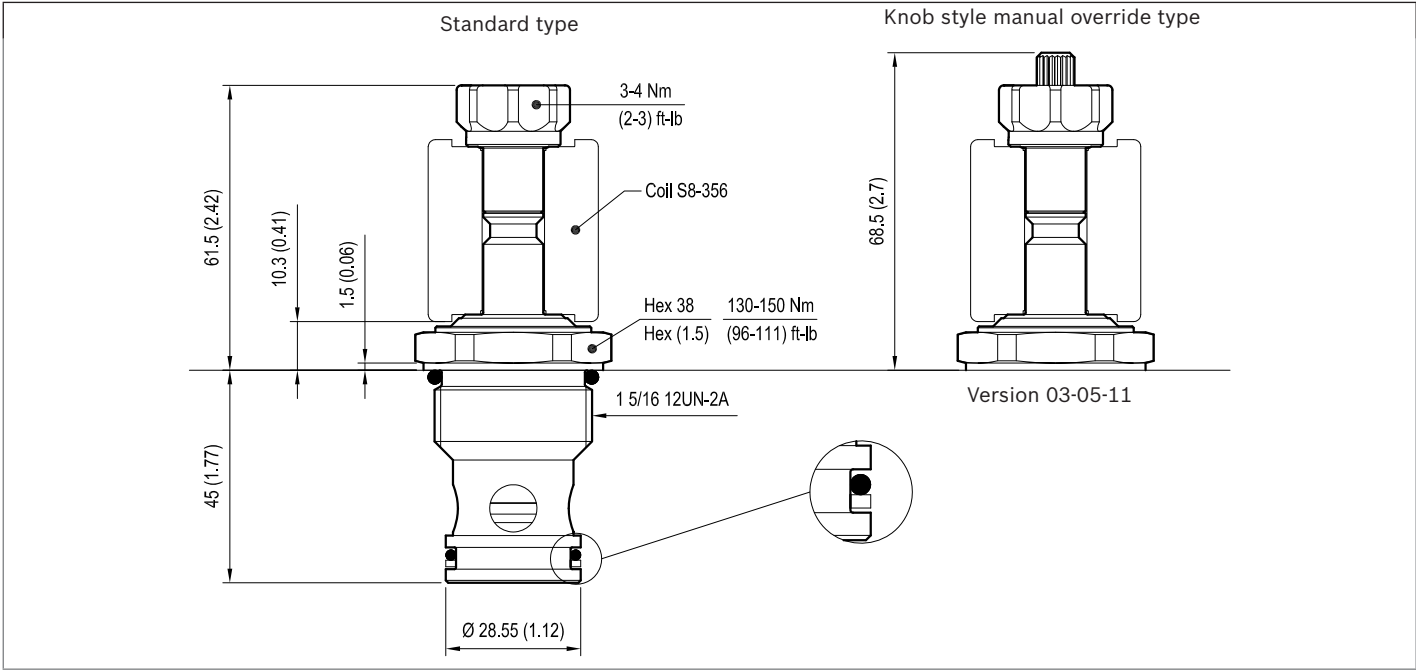
Version 31

Standard



Dimensions

▼ **Version 05: Solenoid operated valves, poppet 2-way normally closed**



▼ **Version 03: Solenoid operated valves, poppet 2-way normally closed**

▼ **Version 31: Solenoid operated valves, poppet 2-way double lock normally closed**

