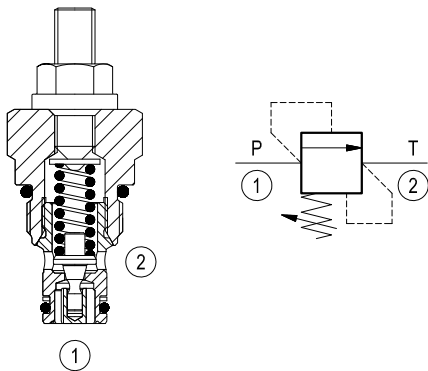


Relief, direct acting guided poppet type

Common cavity, Size 08

VSBN-08A

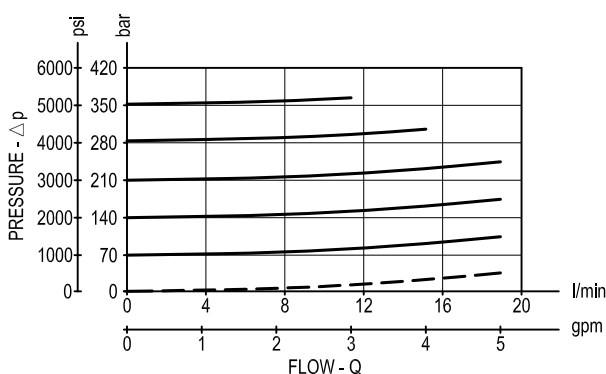
04.11.49 - X - 56 - Z



Description

Flow is blocked from 1 to 2 until pressure increases to meet the selected valve setting, lifting the poppet from its seat and allowing relief flow through port 2 to tank. Pressure at port 2 is additive to the relief setting of the valve. The unique Bosch Rexroth Oil Control poppet design provides enhanced stability at all flows and pressures.

Performance



Technical data

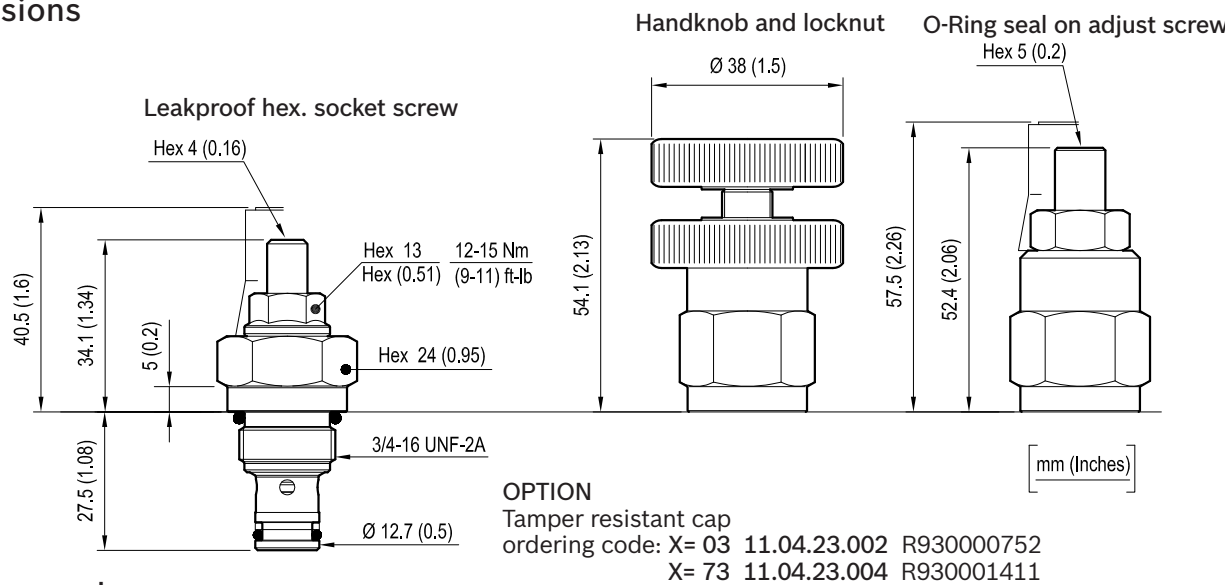
| | | |
|------------------------------------|-------------------|--|
| Max. operating pressure port 1 (P) | bar (psi) | 350 (5000) |
| Max. pressure admitted port 2 (T) | bar (psi) | 140 (2000) |
| Max. flow | l/min. (gpm) | 20 (5.3) |
| Max. internal leakage (*) | drops/min. | 15 |
| Fluid temperature range | °C (°F) | -30 to 100 (-22 to 212) |
| Installation torque | Nm (ft-lbs) | 34-41 (25-30) |
| Weight (**) | kg (lbs) | 0.09 (0.2) |
| Cavity | | CA-08A-2N see data sheet RE 18325-70 |
| Seal kit (***) | code material no. | RG08A2010520100 R901101437 |
| Fluids | | Mineral-based or synthetics with lubricating properties at viscosities of 10 to 500 mm ² /s (cSt) |
| Filtration | | Nominal value max. 10µm (NAS 8) ISO 4406 19/17/14 |
| Installation | | No restrictions |
| Other general technical data | | See data sheet RE 18350-50 |

(*) Max. to 80% of nominal setting

(**) Standard version X=03 type

(***) Only external seals for 10 valves

Dimensions



Ordering code

| | | | | | |
|----------|---|----|---|----|---|
| 04.11.49 | X | 56 | Z | 00 | * |
|----------|---|----|---|----|---|

Series 0/A to L
unchanged performances and dimensions

Relief, direct acting guided
poppet type

Version and options standard

Adjustments

- = 03 Leakproof hex.socket screw
- = 04 Handknob and locknut
- = 73 O-Ring seal on adjust screw

Common cavity, size 08

| | | SPRINGS | | |
|-------------|------|----------------------------------|---------------------------------------|--|
| | | Adj. pressure range bar (psi) | Pres. increase bar/turn (psi/turn) | Std. setting bar (psi) Q=5 l/min |
| for X=03 | = 05 | 10-70 (*) (145-1000) | 26 (375) | 50 (725) |
| | = 10 | 35-140 (500-2000) | 50 (725) | 100 (1450) |
| | = 20 | 105-210 (1500-3000) | 79 (1145) | 200 (2900) |
| | = 35 | 175-350 (2500-5000) | 170 (2465) | 350 (5000) |
| for X=04 | = 35 | 35-350 (500-5000) | 72 (1044) | 200 (2900) |
| for X=73 | = 35 | 35-350 (500-5000) | 72 (1044) | 200 (2900) |

Note: Special settings available. Contact factory authorized
representative for ordering code
(*) minimum pressure setting intended with Q=5 l/min (1.3 gpm)

| Type | Material number |
|-----------------|-----------------|
| 041149035605000 | R901113598 |
| 041149035610000 | R901113599 |
| 041149035620000 | R901097728 |
| 041149035635000 | R901091914 |
| 041149045635000 | R901113600 |

| Type | Material number |
|-----------------|-----------------|
| 041149735635000 | R901113601 |
| | |
| | |
| | |
| | |