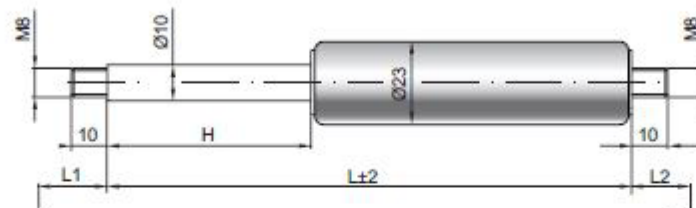
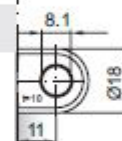
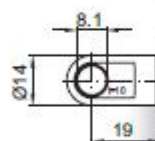


Gas spring G 10-23

Extension force F1	100 - 1200 Newton
Progression	30 %
Piston rod	Ø 10 mm, steel, hard chrome plated
Cylinder	Ø 23 mm, steel, black spray coated
Threads	Steel zinc plated

GZ 10
GZ 10

AU 19
AB 11
only possible on cylinder end


Details

Standard strokes H (mm)

40, 50, 60, 80, 85, 100, 120, 140, 150,
160, 180, 200, 220, 250, 270, 300, 325,
350, 400, 450, 500, 600, 700

Standard length GL

$$L = 2 \times H + 70$$

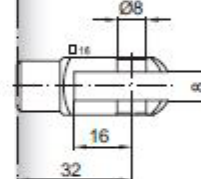
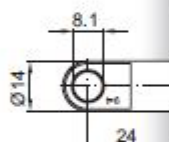
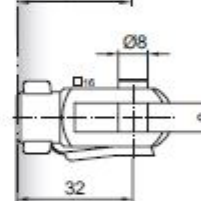
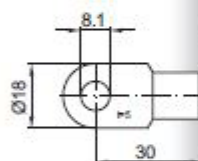
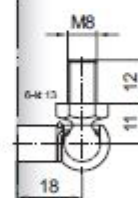
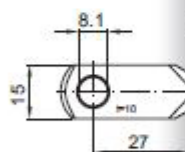
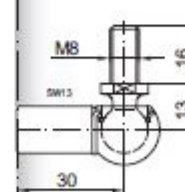
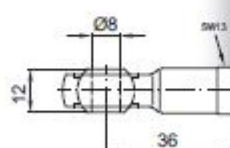
$$GL = L + L1 + L2$$

Extras

- 1 - Wiper ring
- 2 - Radial valve
- 4 - Grease chamber
- 5 - Valve
- 6 - Protection tube
- 7 - Floating piston
- 8 - Locking device
- B3 - Sealing system
- NT - Low-temperature design
- HT - High-temperature design
- RK - Friction element

More **threads** can be found here [▶](#)

Matching brackets can be found here [▶](#)

AS 24
GA 32

AS 30
GG 32

AR 27
WG 18
until max. 800 N

AG 36
WG 30

QV GZ
