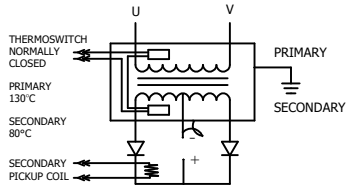


MODEL NUMBER	KVA @ 50% DUTY CYCLE	PRI V / FREQ	SEC V	URNS RATIO	MAX. Δ P	STEPS	FLOW RATE	APPROX. WEIGHT
TDC-8553	100	500/1000	9.1	55:1	10 PSI (.69 BAR)	1	6 LPM	16.8 KG

COOLING: RATINGS BASED ON 30°C MAX INLET TEMPERATURE



TRANSFORMER CASE MUST BE GROUNDED.

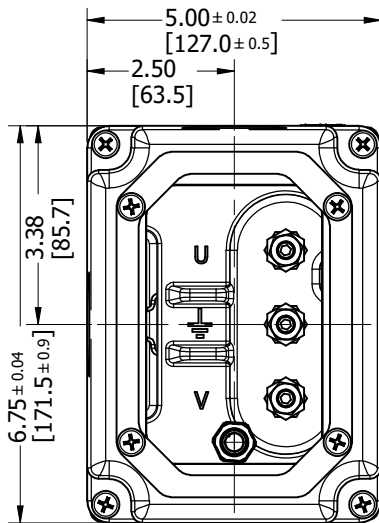
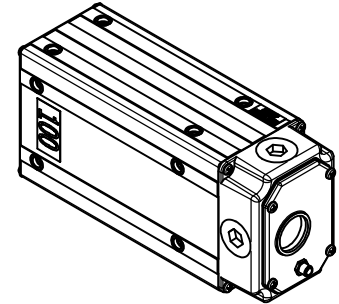
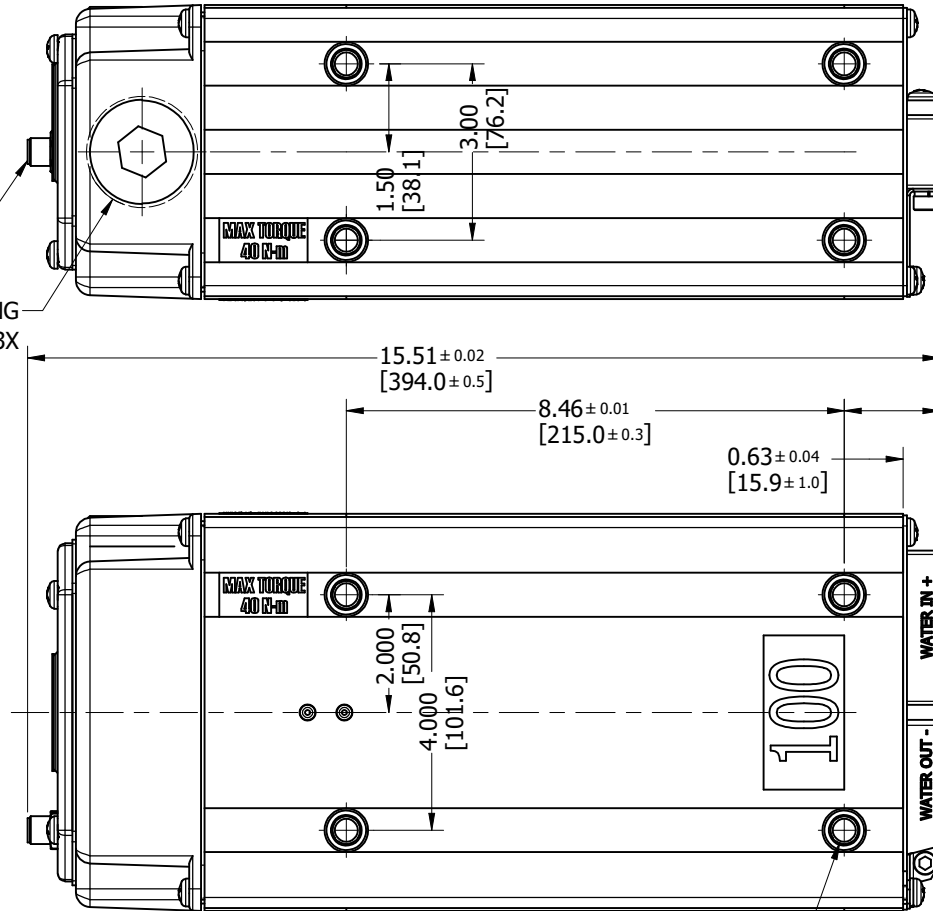
FOR SAFETY, ROMAN MFG. RECOMMENDS GROUNDING OF SECONDARY CIRCUIT PER OUR UNIVERSAL PRODUCT MANUAL. TRANSFORMER IS SHIPPED WITH A BONDING JUMPER BETWEEN SECONDARY & CASE.

SEE RATING CURVE FOR DUTY CYCLE REQUIREMENTS.

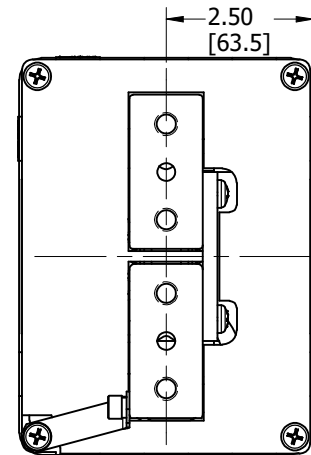
- 1)BRN - THERMOSWITCH  
2)WHT - PICK-UP COIL  
3)BLU - PICK-UP COIL  
4)BLK - THERMOSWITCH

TURCK FS 4.4-0.5

PRIMARY OPENING  
1 1/2 - 11.5 NPT 3X



VIEW SHOWN WITH  
COVER REMOVED



MOUNTING HOLES

⌀11.5MM ± 4.5MM  
M10x1.5 - 6H ± 13.5MM 16X  
MAX TORQUE 40 N·m

NOTE\*  
The secondary terminals of this device are intended as an electrical connection only. Applications must be designed to minimize any forces applied to the secondary terminals, this can be accomplished by transferring forces to a structural member.

NOTE:  
SEE RC-8553 FOR RATING CURVE  
SEE LC-8553 FOR LOAD CURVE

DIMENSIONS: IN [MM]

TOLERANCES UNLESS OTHERWISE SPECIFIED:  
FRACTIONS = +/- 1/32  
DECIMALS  
.X = +/- .020  
.XX = +/- .010  
.XXX = +/- .005  
.XXXX = +/- .0010  
ANGLES = +/- 1°  
FINISH IN RMS = 125 MAX  
CONCENTRICITY = .010 TIR  
BREAK ALL SHARP EDGES  
UNLESS OTHERWISE SPECIFIED

REV	DESCRIPTION	DATE
1	POWER SUPPLY	
2	PHYSICAL DRAWING	
3		
4		
5		
6		
7		
8		
9		
10		
11		
12		
13		
14		
15		
16		
17		
18		
19		
20		
21		
22		
23		
24		
25		
26		
27		
28		
29		
30		
31		
32		
33		
34		
35		
36		
37		
38		
39		
40		
41		
42		
43		
44		
45		
46		
47		
48		
49		
50		
51		
52		
53		
54		
55		
56		
57		
58		
59		
60		
61		
62		
63		
64		
65		
66		
67		
68		
69		
70		
71		
72		
73		
74		
75		
76		
77		
78		
79		
80		
81		
82		
83		
84		
85		
86		
87		
88		
89		
90		
91		
92		
93		
94		
95		
96		
97		
98		
99		
100		