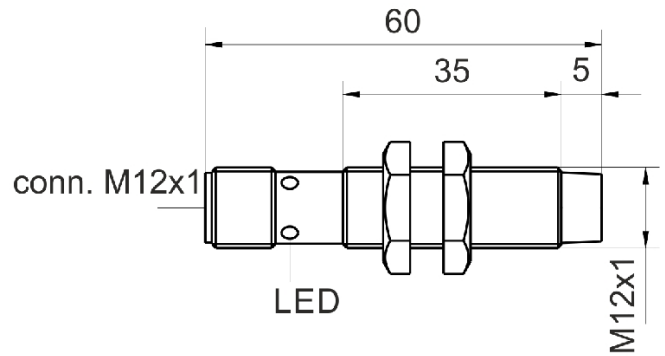
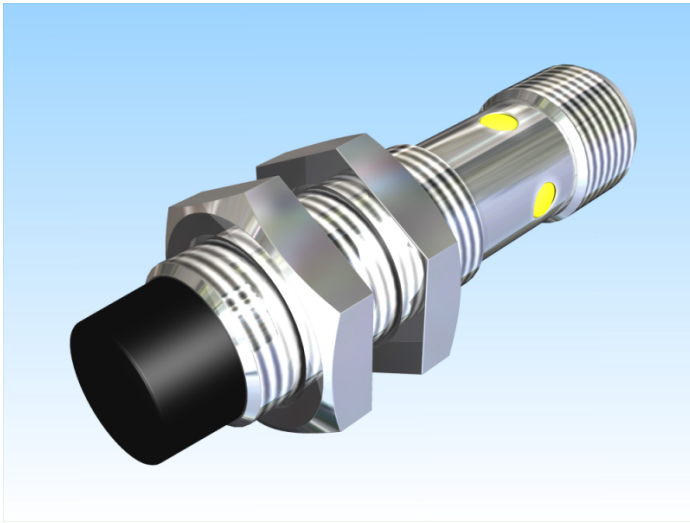


Product Description

inductive sensor DC




Name
Order number
Matchcode
Switching distance
Mounting

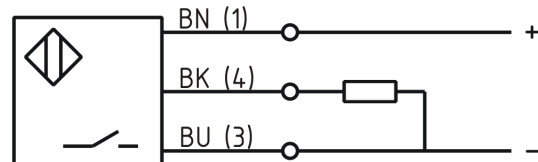
Switch type

Signal Type
Connection
Connection diagramm

KJ4-M12MN60-DPS-V2
08317624265
9962-4265
4 mm

 non shielded

 N.O.
DC PNP
connector M12



fine-pitch thread M12 x 60

Dimension (in mm)
Technical Specification
Operating voltage
Max. ripple
Voltage drop
Max. load current
No load current
Leakage current
Switching frequency
Switching hysteresis
Operating temperature
Temperature drift
Repeat accuracy
Switching state
Time delay
Short-circuit proof
Overload protection
Reverse voltage protection
Protection category
EMC-level
Housing material
Material active face

10 - 30 VDC
 $\leq 10 \%$
2,4 V
200 mA
 $\leq 13 \text{ mA}$
 $\leq 10 \mu\text{A}$
800 Hz
 $\leq 15 \%$
-25 ° C to 70 ° C
 $\leq 10 \%$
 $\leq 5 \%$
LED
300 ms
yes
yes
yes
IP67
DIN EN 60947-5-2: 2008
Brass, nickel plated
Pocan KU 2-7503/1 + Batch RAL 9004LS



KJ4-M12MN60-DPS-V2

Utilisation category	DC 13
Contact material	Cu
Contact surface material	NiAu
Contact holder	Makrolon 2405 farblos
Termination	Connector M12 4pin
FIT / MTTF acc. SIEMENS 29500	51,90 / 2200y

Errors and omissions exceptet